

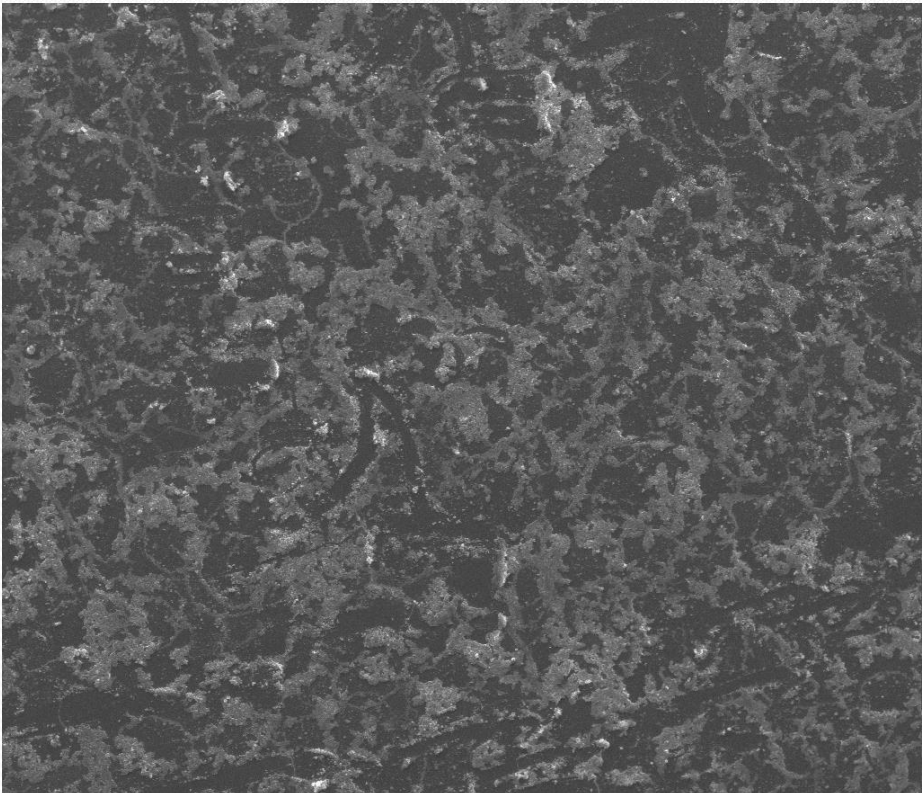
SEM Images

Spray coat with PS/SDS solution

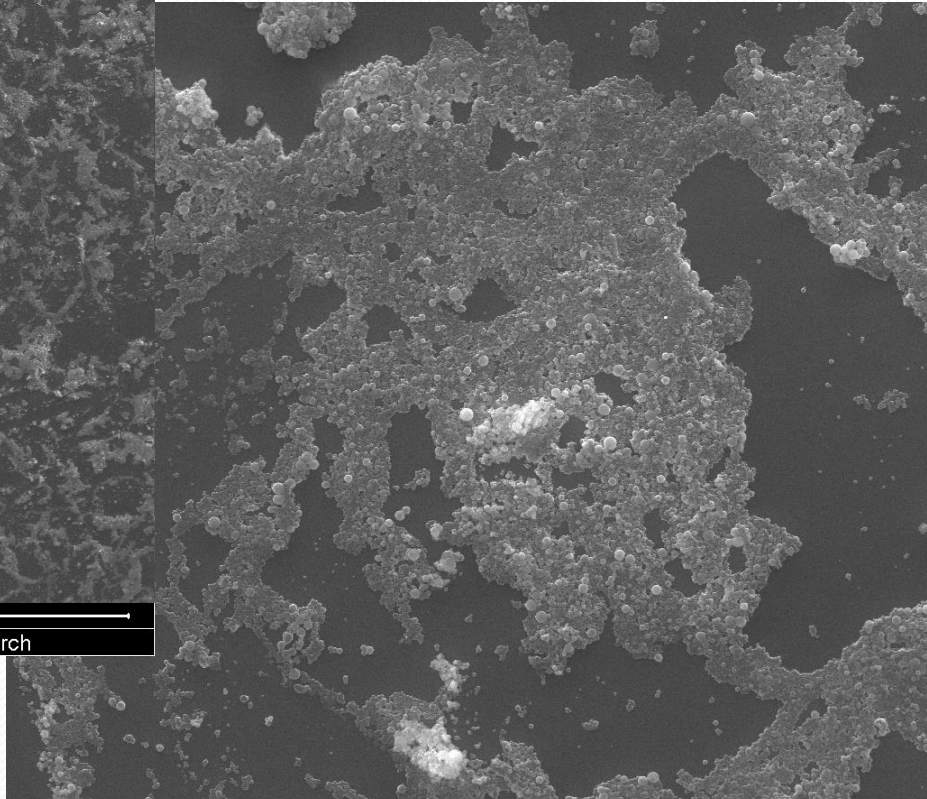
30% ethanol / 1% solid

Washed NP

60°C 0,2ml/min

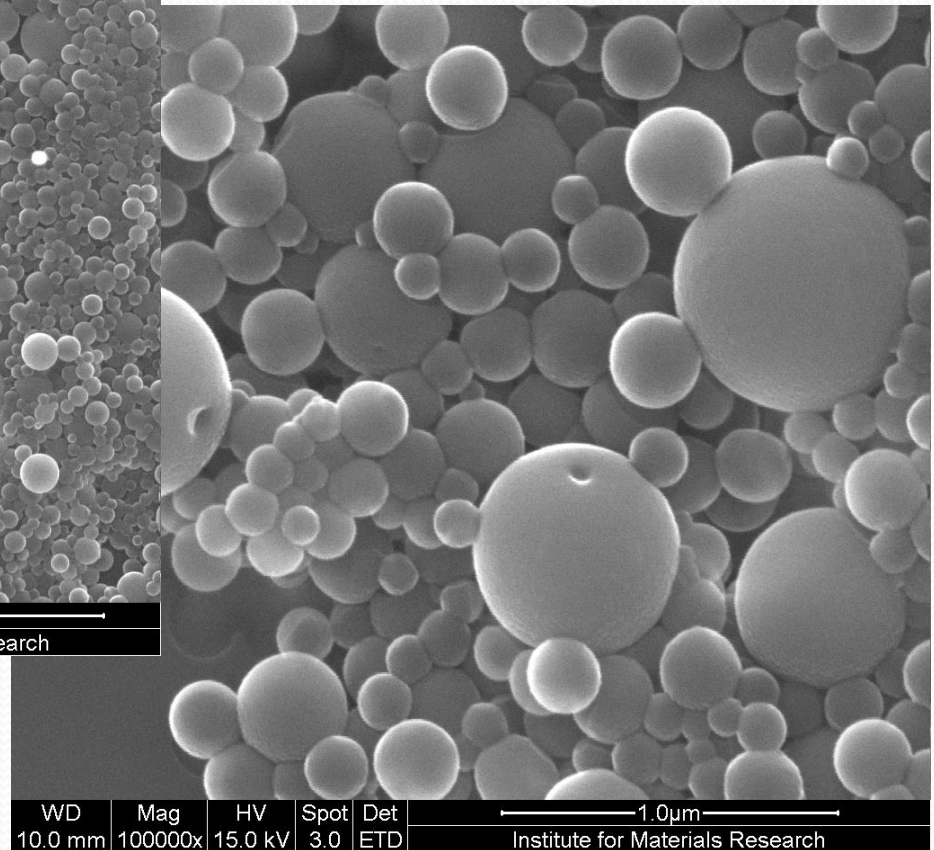
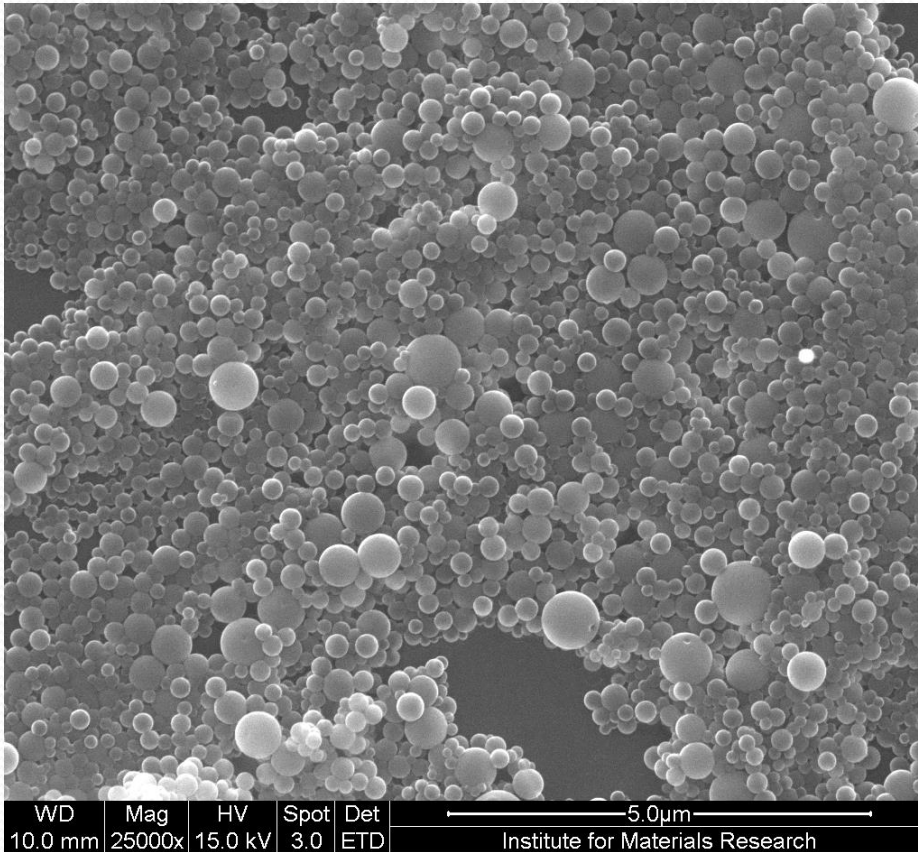


WD	Mag	HV	Spot	Det	← 300.0µm →
10.0 mm	500x	15.0 kV	3.0	ETD	Institute for Materials Research

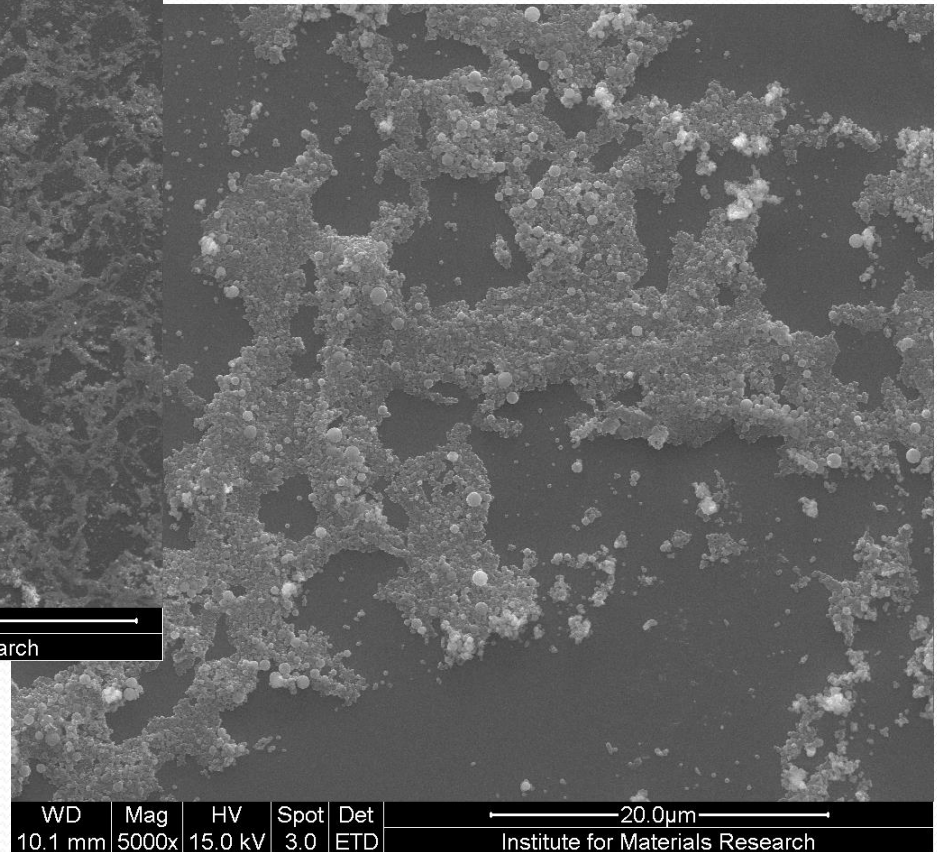
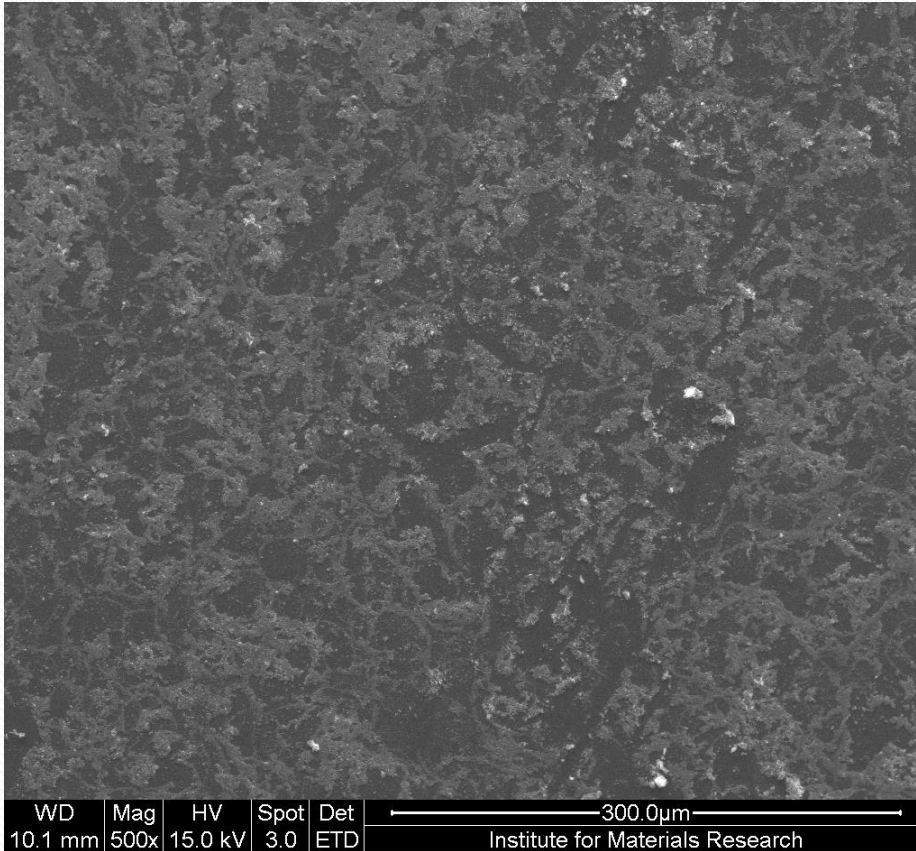


WD	Mag	HV	Spot	Det	← 20.0µm →
10.0 mm	5000x	15.0 kV	3.0	ETD	Institute for Materials Research

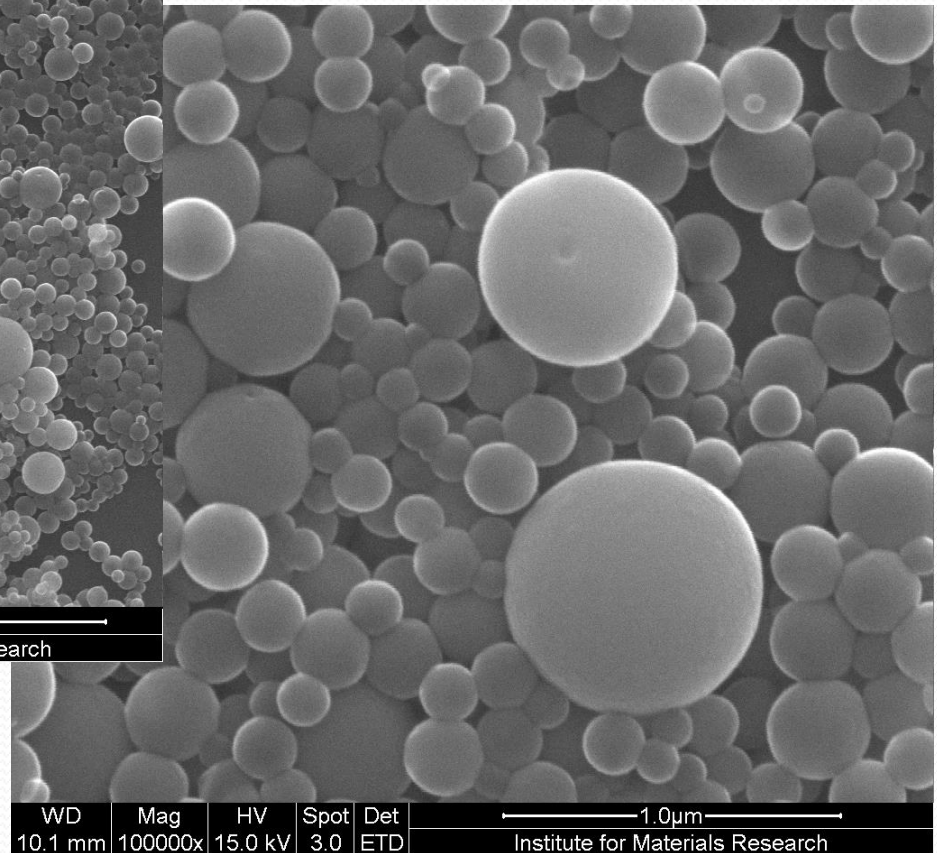
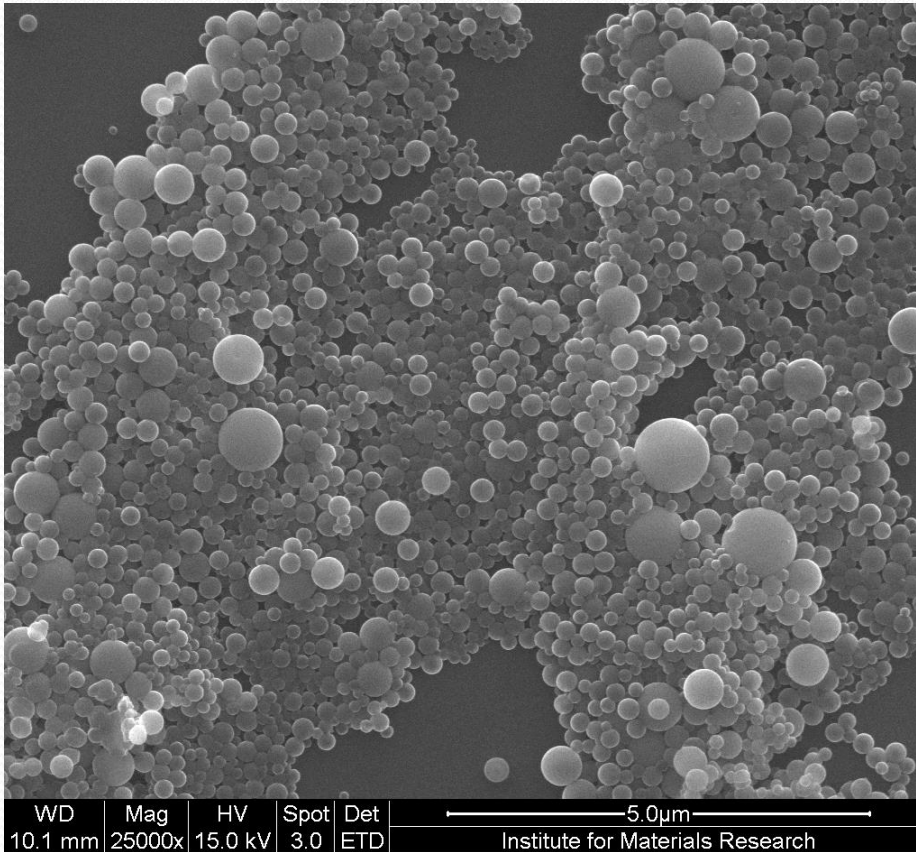
60°C 0,2ml/min



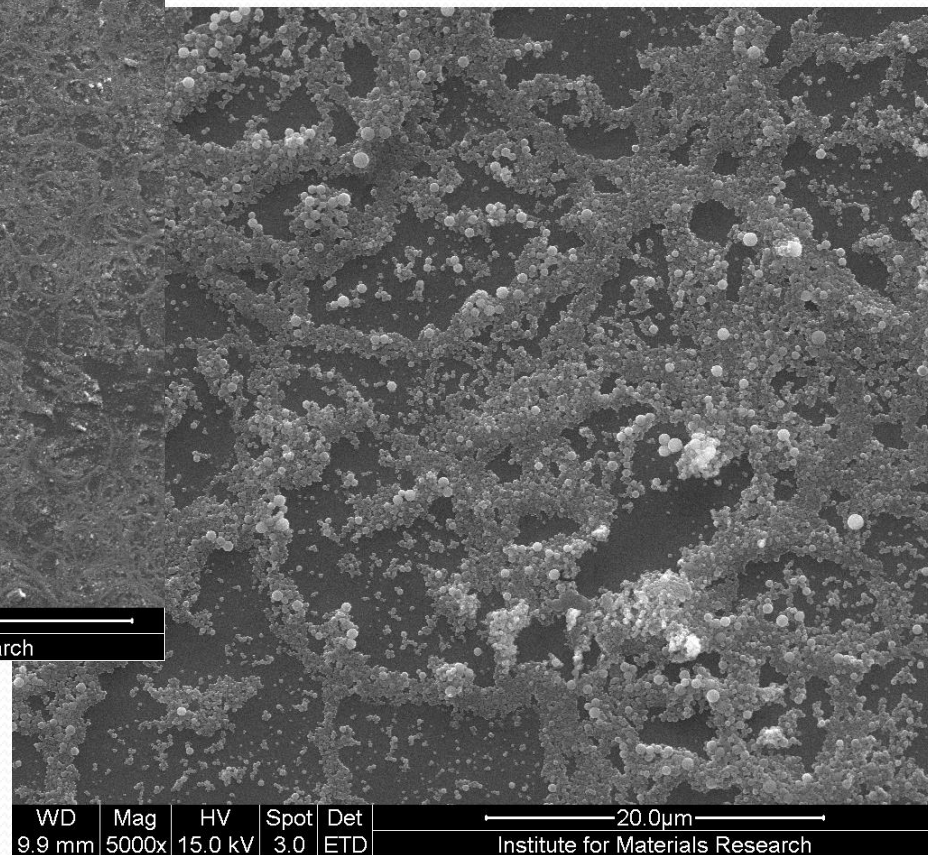
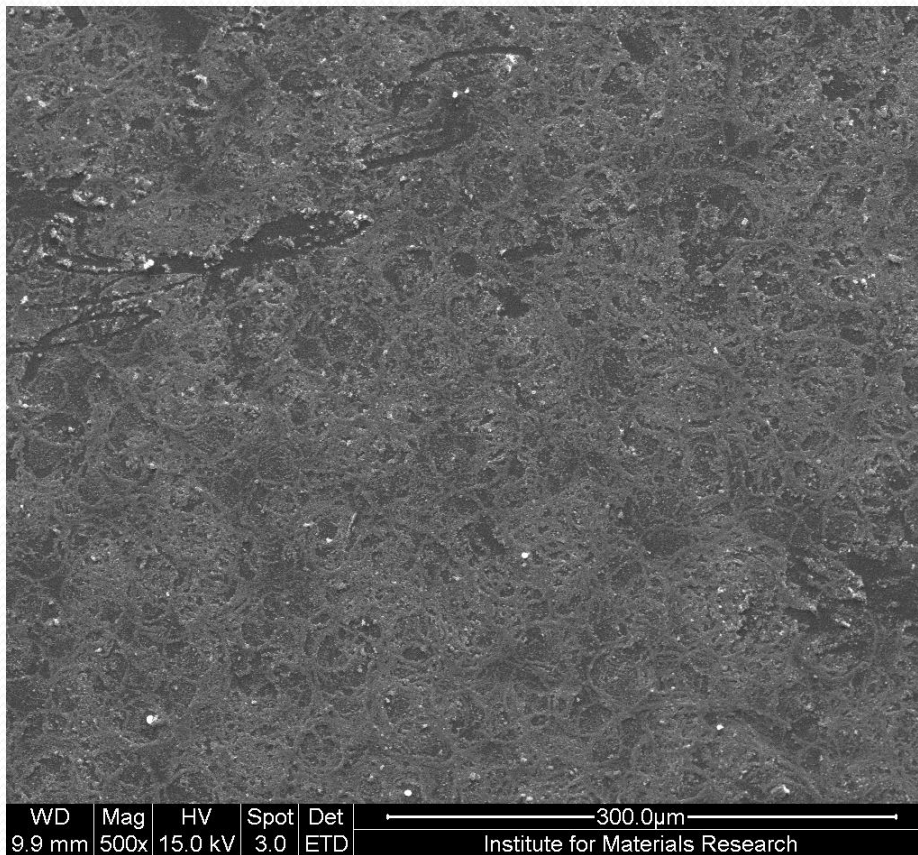
70°C 0,2ml/min



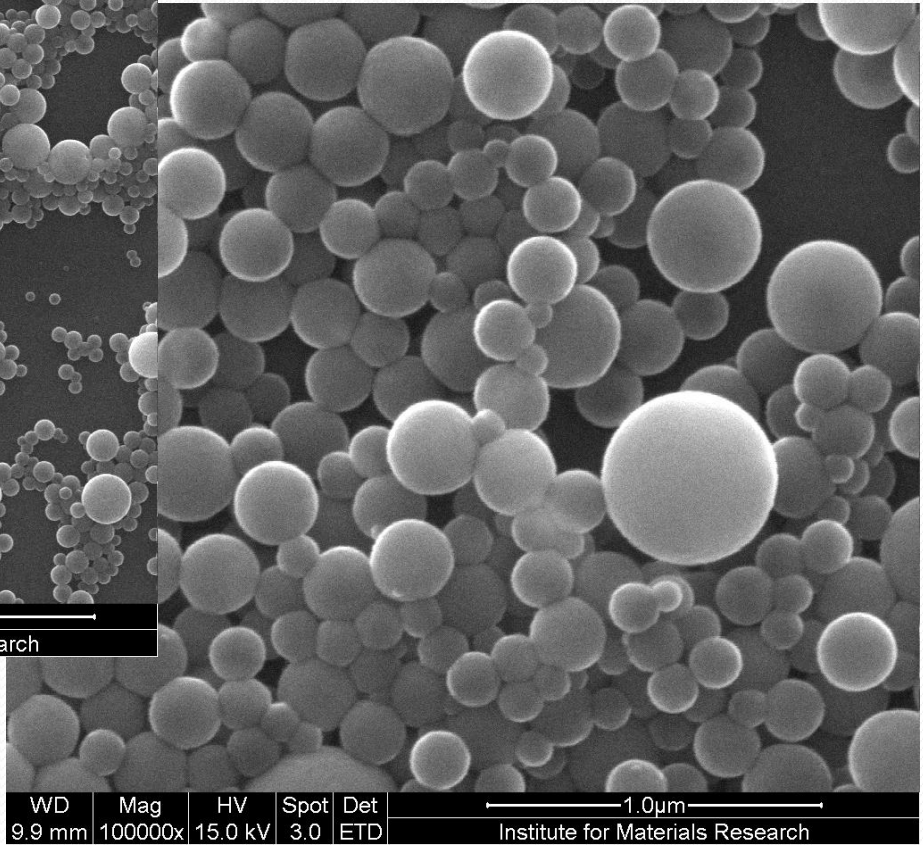
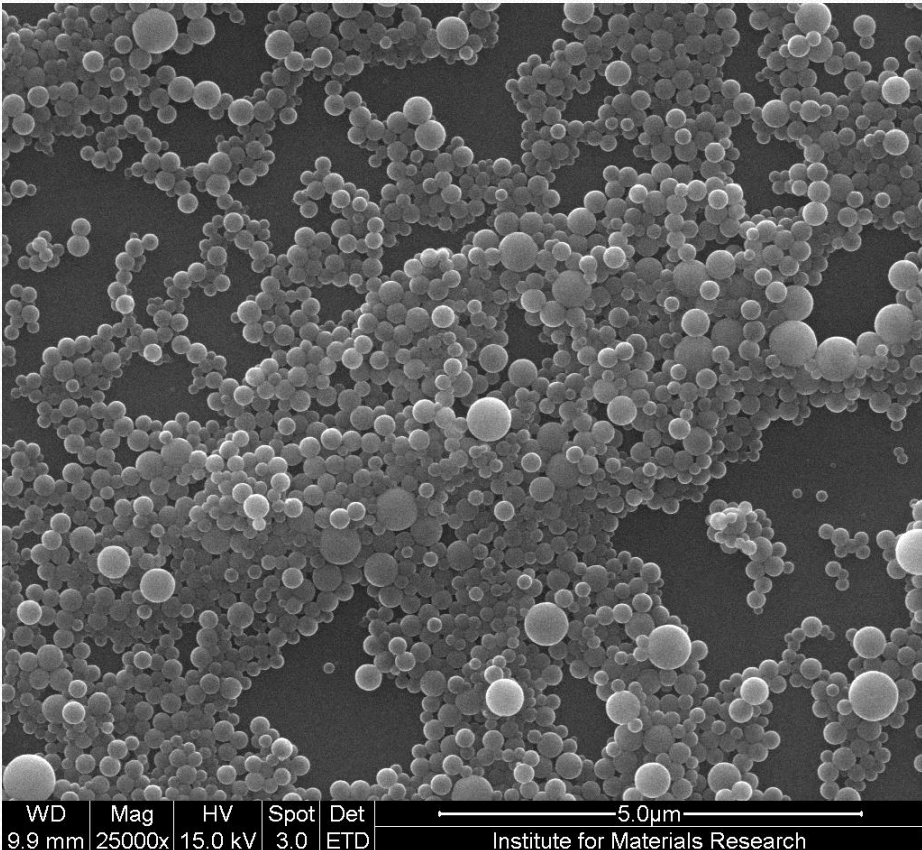
70°C 0,2ml/min



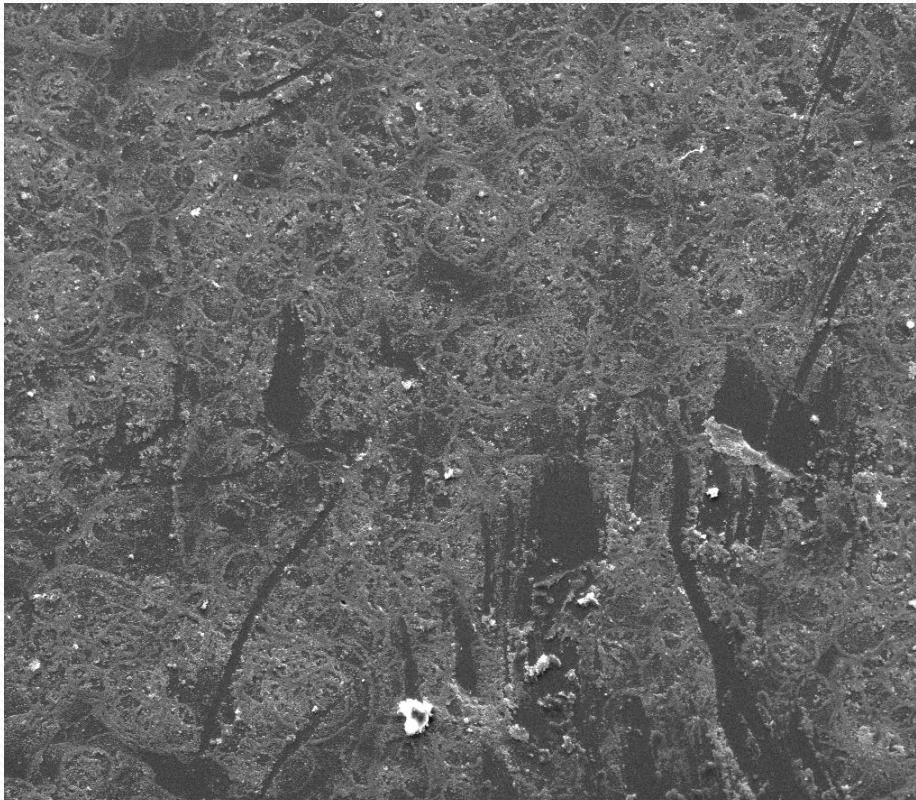
80°C 0,2ml/min



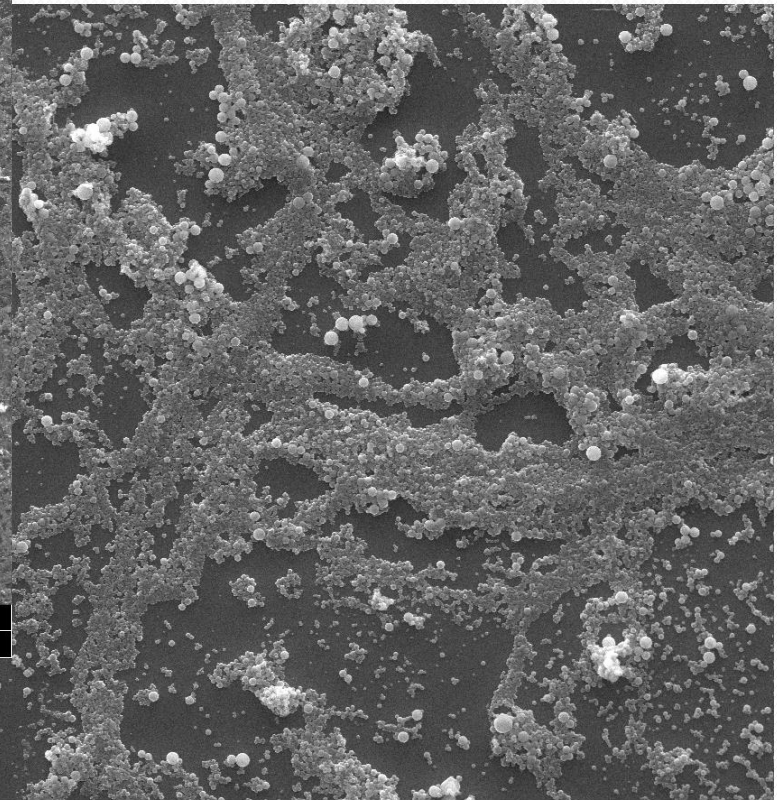
80°C 0,2ml/min



90°C 0,2ml/min

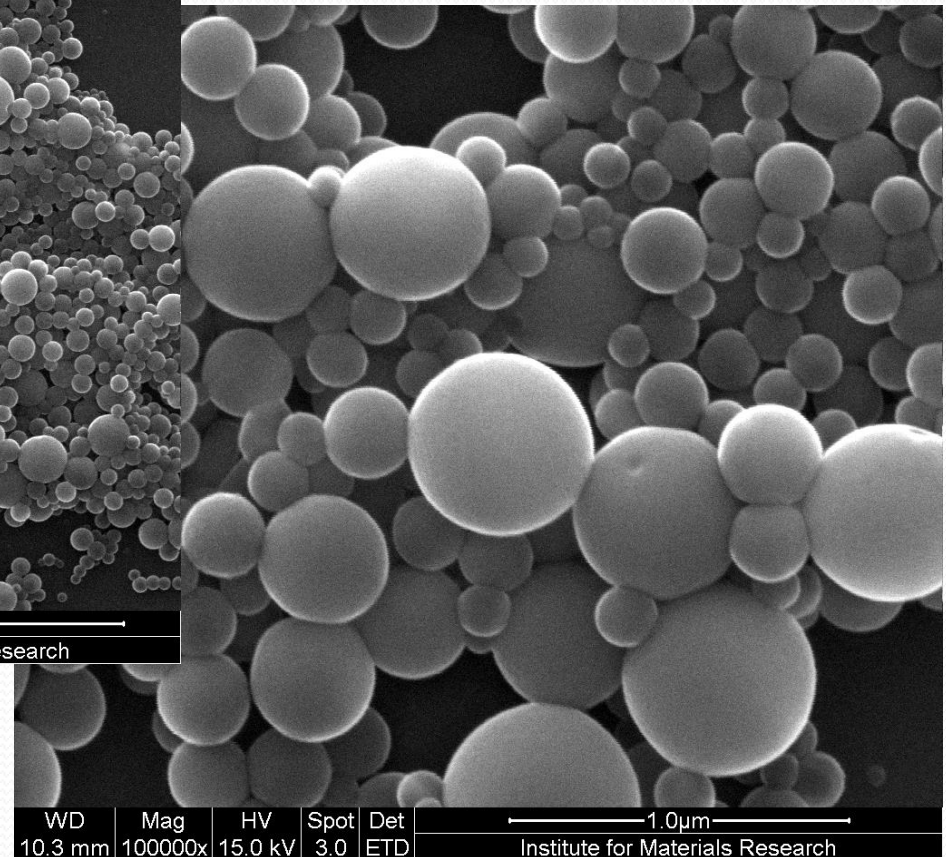
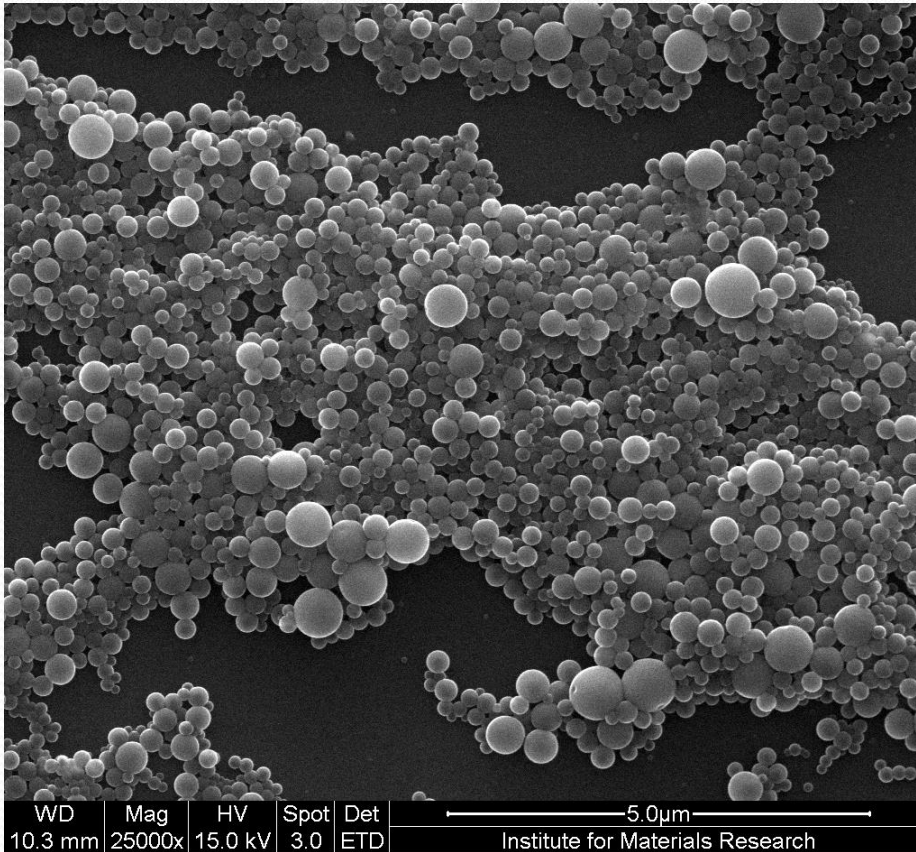


WD	Mag	HV	Spot	Det	300.0µm
10.3 mm	500x	15.0 kV	3.0	ETD	Institute for Materials Research

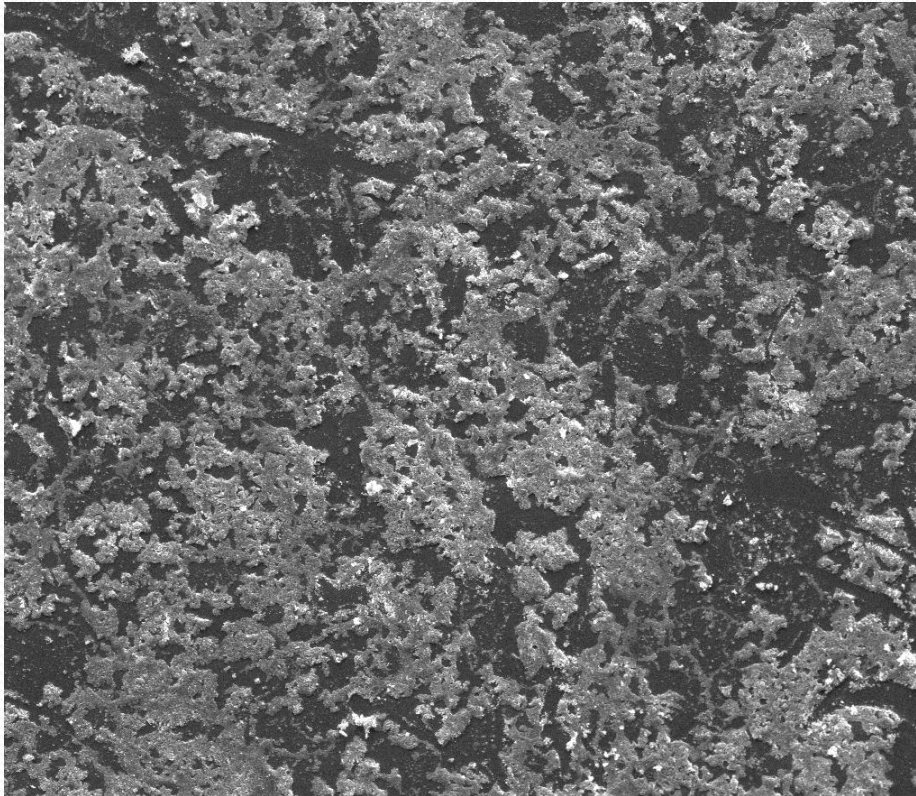


WD	Mag	HV	Spot	Det	20.0µm
10.3 mm	5000x	15.0 kV	3.0	ETD	Institute for Materials Research

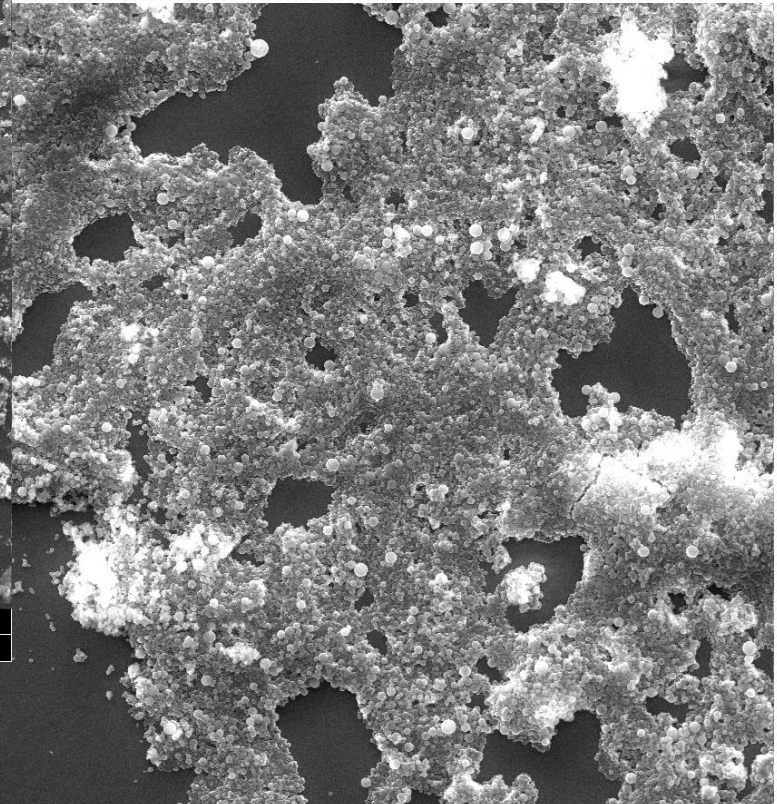
90°C 0,2ml/min



70°C 0,3ml/min

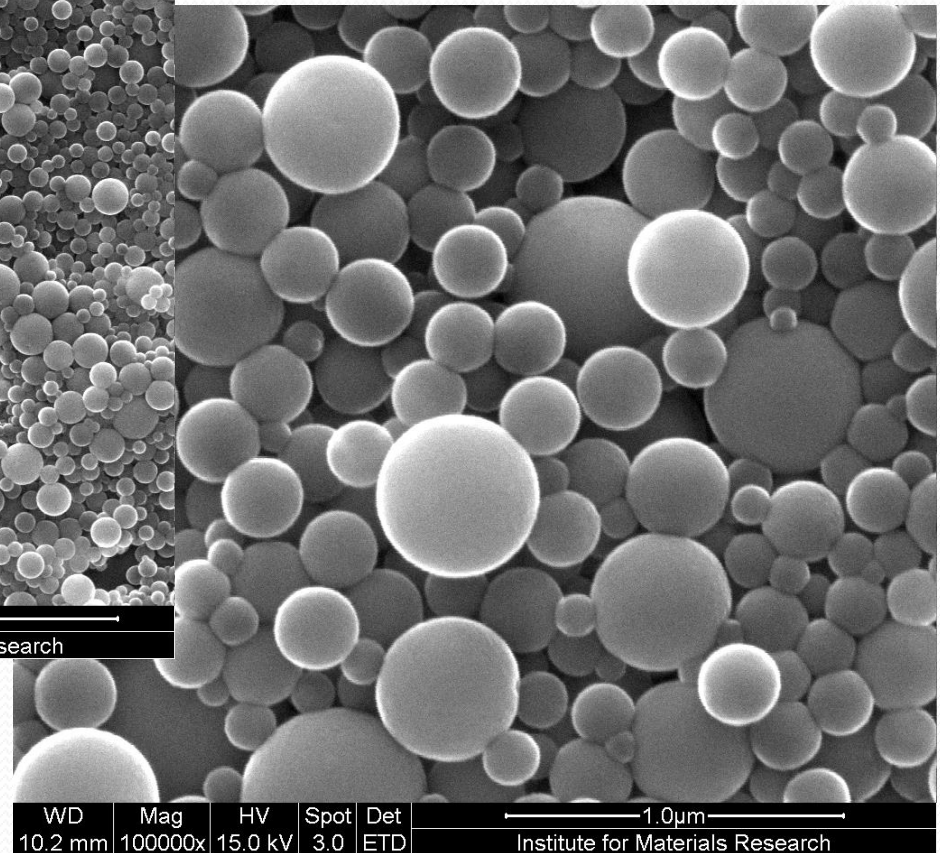
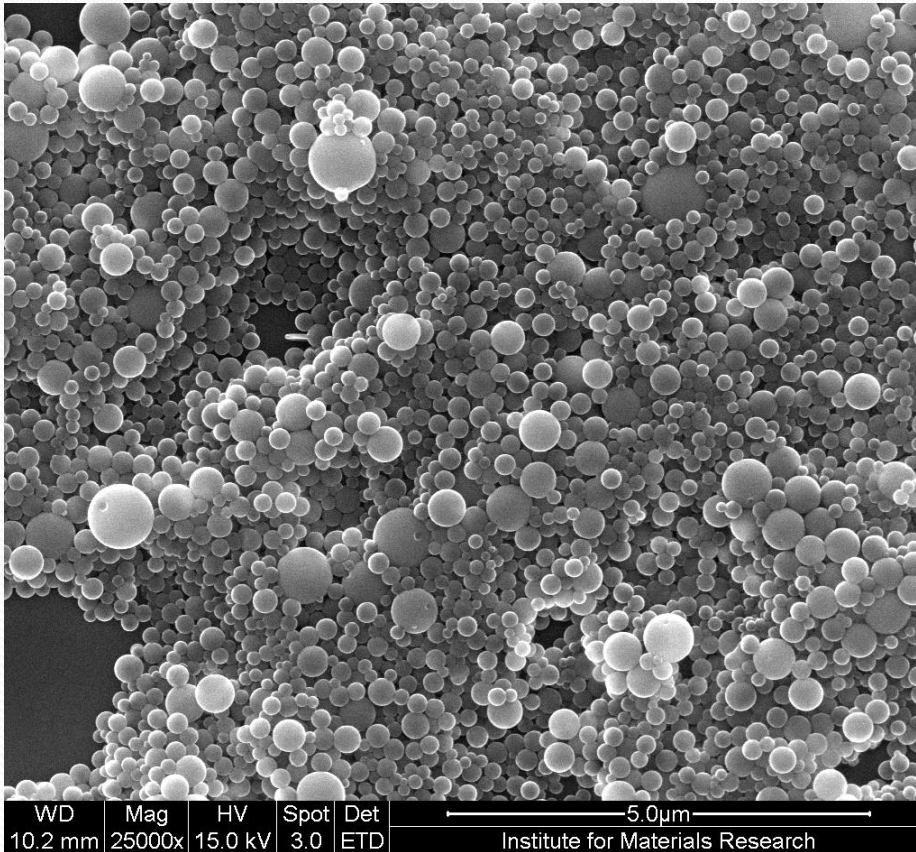


WD	Mag	HV	Spot	Det	300.0µm
10.2 mm	500x	15.0 kV	3.0	ETD	Institute for Materials Research



WD	Mag	HV	Spot	Det	20.0µm
10.2 mm	5000x	15.0 kV	3.0	ETD	Institute for Materials Research

70°C 0,3ml/min



Conclusion

- The best flow rate were 0.1 and 0.2 ml/min
- It still have some holes
- The next step was print with a 70% ethanol solution